

ONE REGIONAL DEPARTMENT



ADVANTAGES OF COMBINING SERVICES

Uniform & Consistent Law Enforcement

Improvements for Police Personnel

- Recruitment
- Training
- Deployment
- Distribution
- Efficiency

Increased Management and Supervision

Reduced Costs/Maintain

WHY COMBINE THE REGIONALS



Increase in officer safety



Improved efficiency



More manpower to address issues (speeding, thefts, etc.)



Savings to taxpayers



CONTROL & COMMUNICATION

Control

- Police Commission made up of members from participating municipalities.
- Police still have consistent contact with borough councils & township commissioners to address issues.

Borough & Township Manager

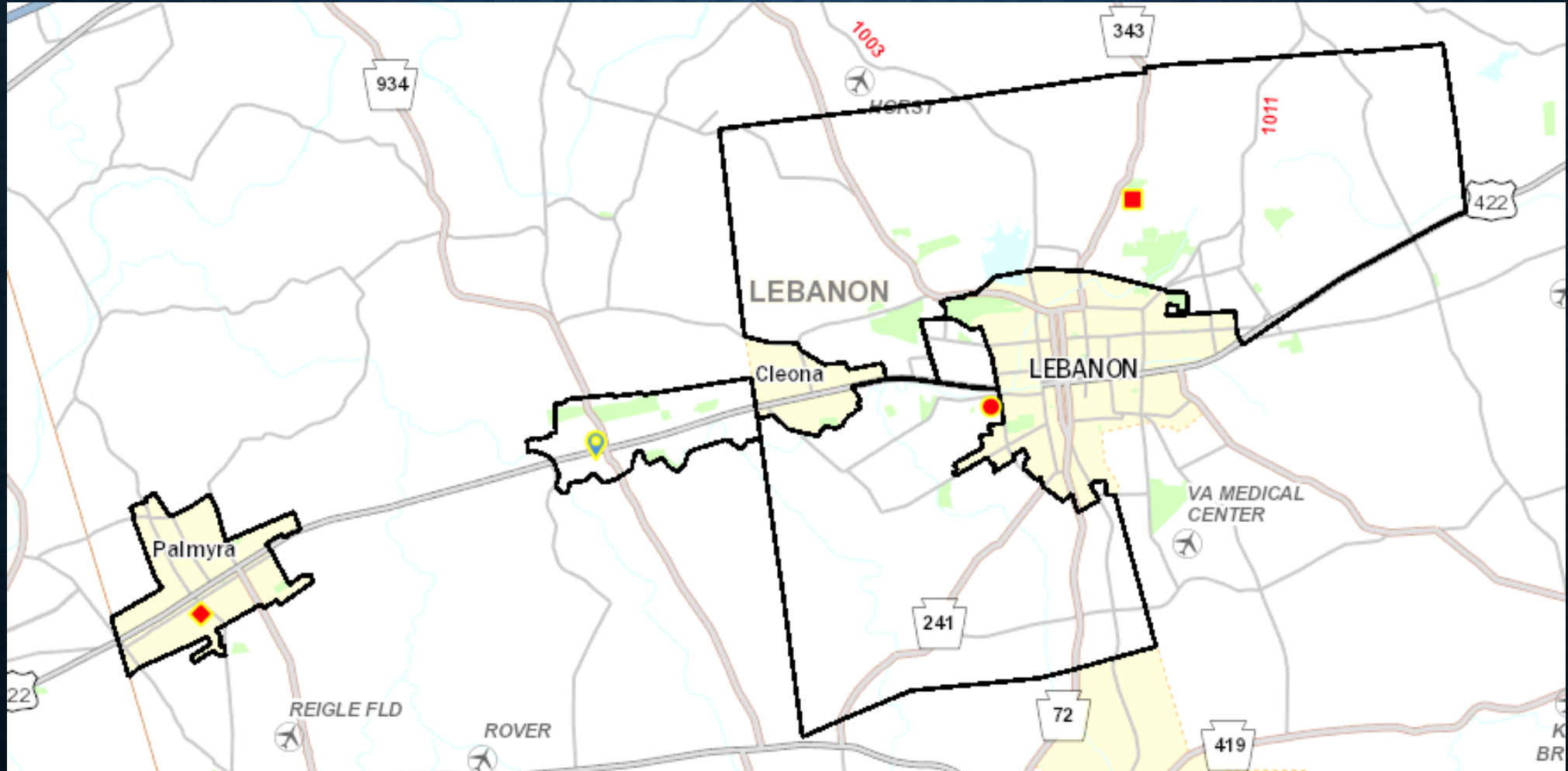
- Police still have consistent contact with managers. By removing police, it allows the managers more time to focus on issues & infrastructure of their respected communities.

The key for a successful Regional Police Department is to have open lines of communication with all participating municipalities

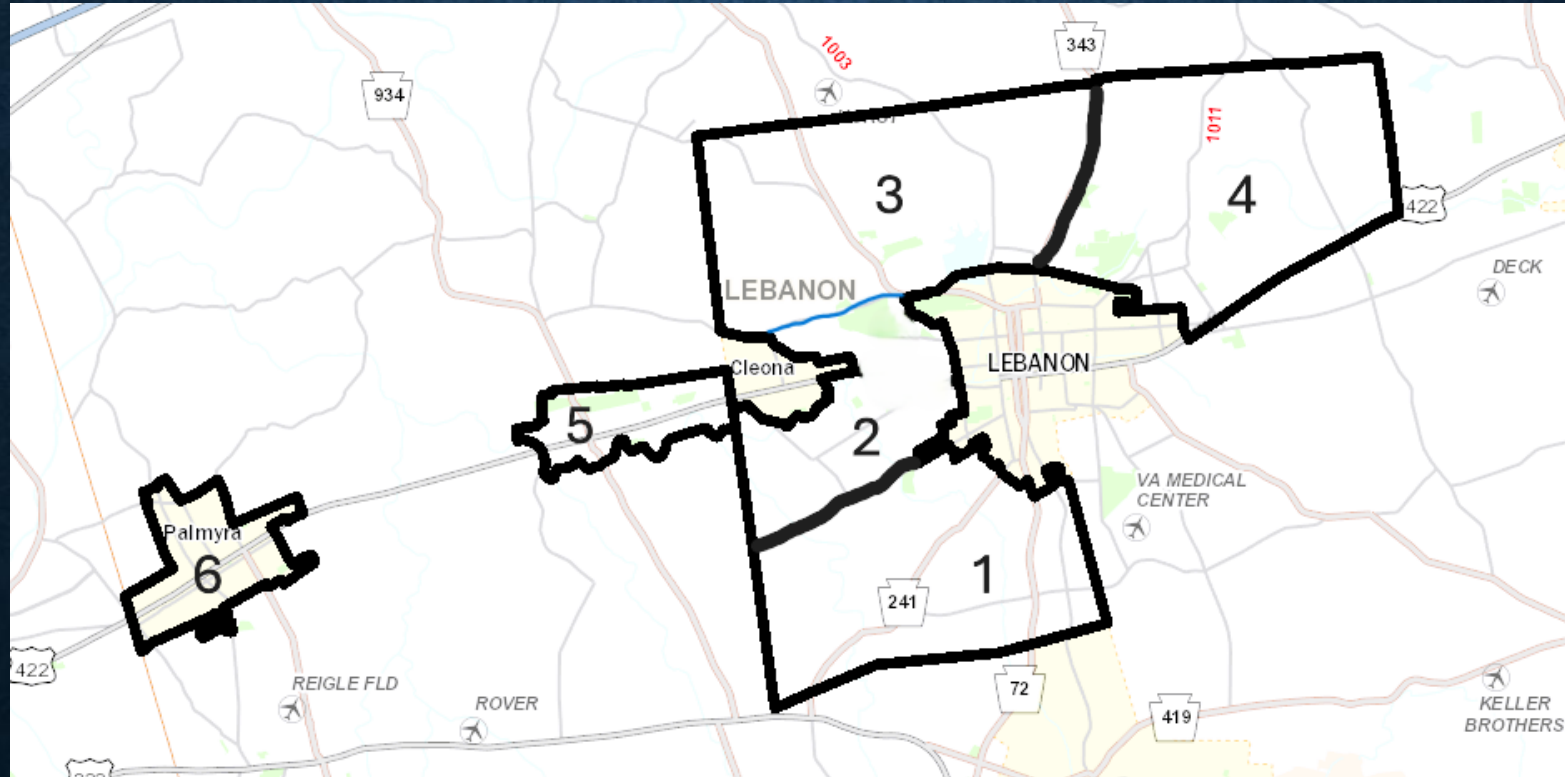
MUNICIPAL POLICE STATISTICS

Category	LCRPD	WLCRPD	Total
Population	21,385	12,589	33,974
2026 Police Budget	\$5,261,419.60	\$3,277,589.74	\$8,539,009.34
2026 Per Capita	\$246.03	\$260.35	\$251.34
Total Square Miles	26.7	3.7	30.4
Total Road Miles	143.5	46.7	190.2
2025 Part 1 Crimes	295	98	393
2025 Part 2 Crimes	417	319	736
Total Crimes	712	417	1,129
Officers	24	16	40
Clerical Staff	4 (3full & 1part-time)	2 (part-time)	6
Police Vehicles	15	8	23

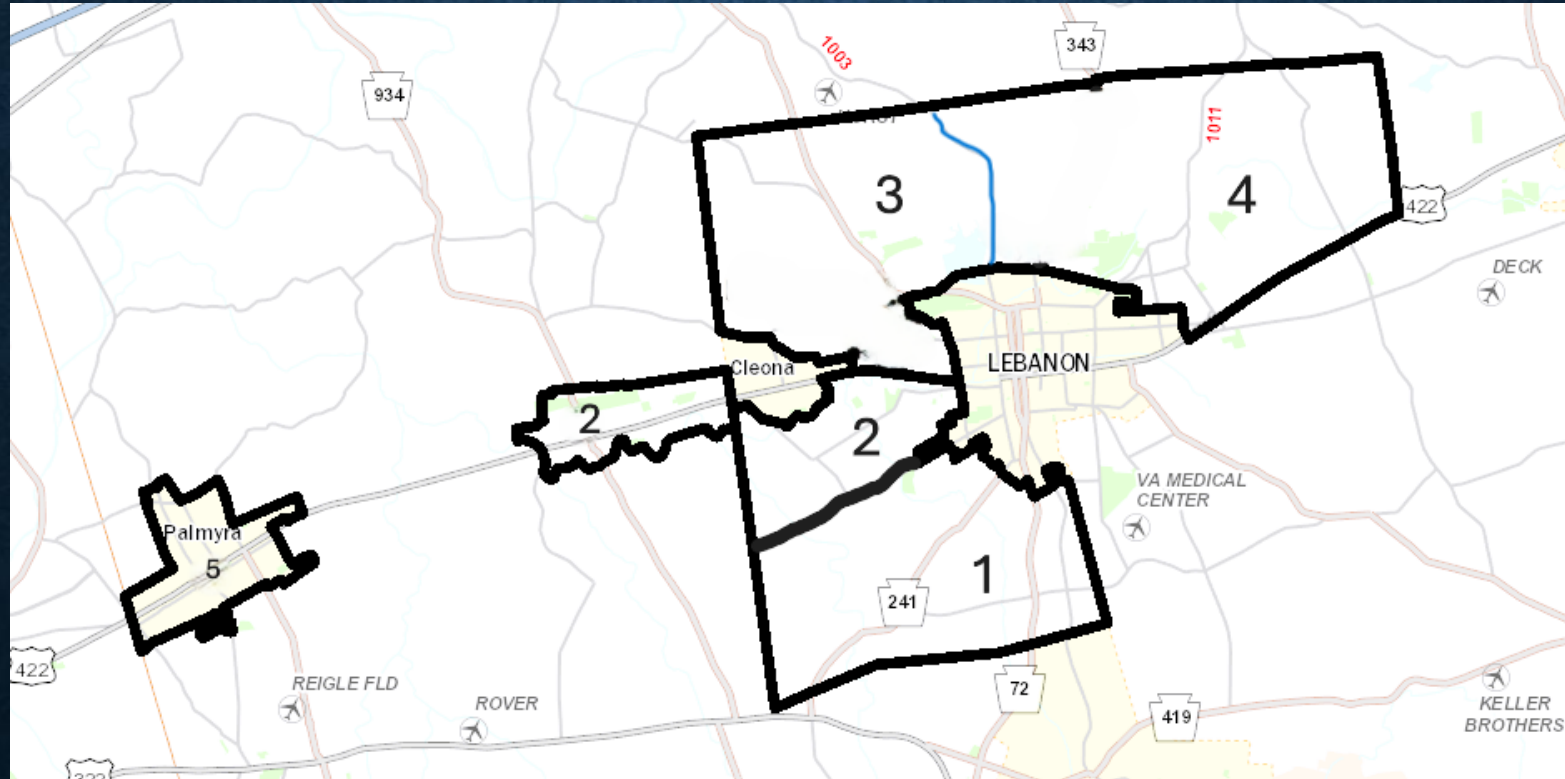
REGIONAL COVERAGE AREA

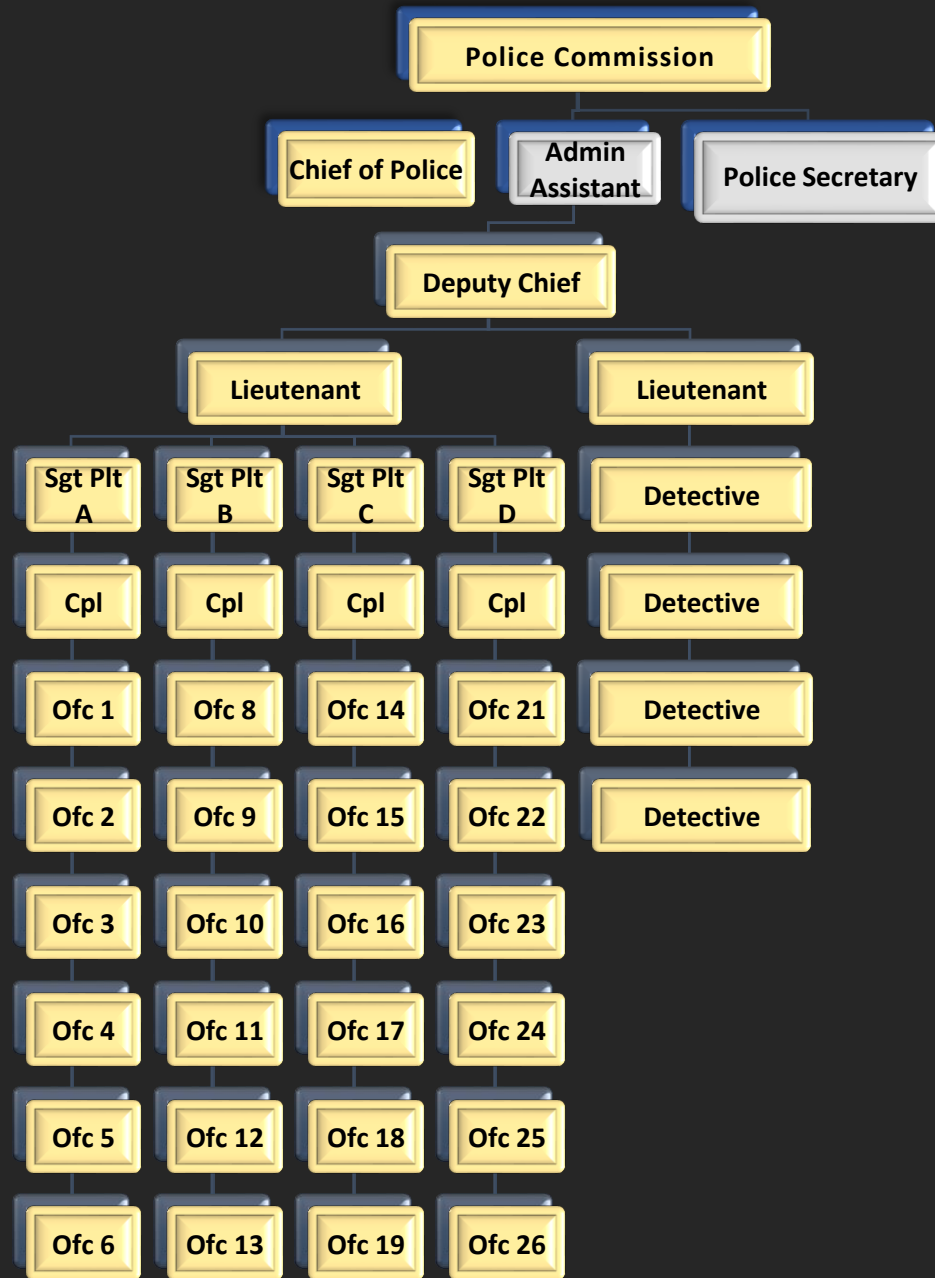


6 ZONE AREA



5 ZONE AREA





*40 Officers
 1 Admin Assistant
 2 Full-time Secretary
 3 Part-time Secretary*

BENEFITS OF A FULL-SERVICE DETECTIVE DIVISION

- Follow-up investigations to supplement patrol
- Handle serious in-depth calls to service, including the use of the Voice Stress Analyzer
- Process crime scenes
- Handle search warrants/digital evidence
- Pro-active surveillance details
- Working days, nights, and weekends (as needed)
- Specialized in specific criminal investigations, FBI task force, drugs, robbery, burglaries, computer crimes, sex crimes, child abuse, and white-collar crimes.
- Computer and cell phone forensics

BENEFITS OF A FULL- SERVICE DETECTIVE DIVISION

One of the positions can be used on a rotating bases. This allows for officers to gain skills in the following:

- Improve/develop interview skills
- Crime scene processing
- Search warrant preparation

After a 3-6 month transfer the officer returns to patrol. This is a benefit because:

- The officer will take what they learned back to patrol where it can be utilized
- It allows officers the chance to see if they like detective duties
- Expands the pool of candidates when permanent positions are open

WESTERN LEBANON COUNTY REGIONAL POLICE HEADQUARTERS



WESTERN LEBANON COUNTY REGIONAL POLICE SUBSTATION



LEBANON COUNTY REGIONAL POLICE HEADQUARTERS



LEBANON COUNTY REGIONAL POLICE SUBSTATION



POLICE VEHICLES

IACP RECOMMENDS A 1.5 TO 2 OFFICER PER VEHICLE

# Officers	# Vehicles	Ratio
40	23	1.7

The department fleet would include the following vehicles:

- 2- 2024 Chevy Tahoe
- 3- 2023 Chevy Tahoe
- 2- 2022 Ford Interceptor
- 3- 2021 Ford Interceptor
- 1- 2020 Ford Interceptor
- 2- 2020 Chevy Tahoe
- 1- 2019 Ford Interceptor
- 4- 2018 Ford Interceptor
- 1- 2017 Ford F-150

- 1- 2016 Ford Interceptor
- 1- 2008 Ford Crown Vic
- 1- 2007 Chevy Colorado
- 1- 2005 Ford Interceptor

COMBINED MANPOWER WITH SGT, CPL & OFFICERS WORKING 12HR SHIFT

	MON	TUES	WED	THURS	FRI	SAT	SUN
0700-1900	8	8	8	8	8	8	8
1900-0700	8	8	8	8	8	8	8
0700-1700	5	8	8	8	3		
TOTAL	21	24	24	24	19	16	16

0700-1900: Platoon of Sgt, Cpl, 6 Officers

1900-0700: Platoon of Sgt, Cpl, 6 Officers

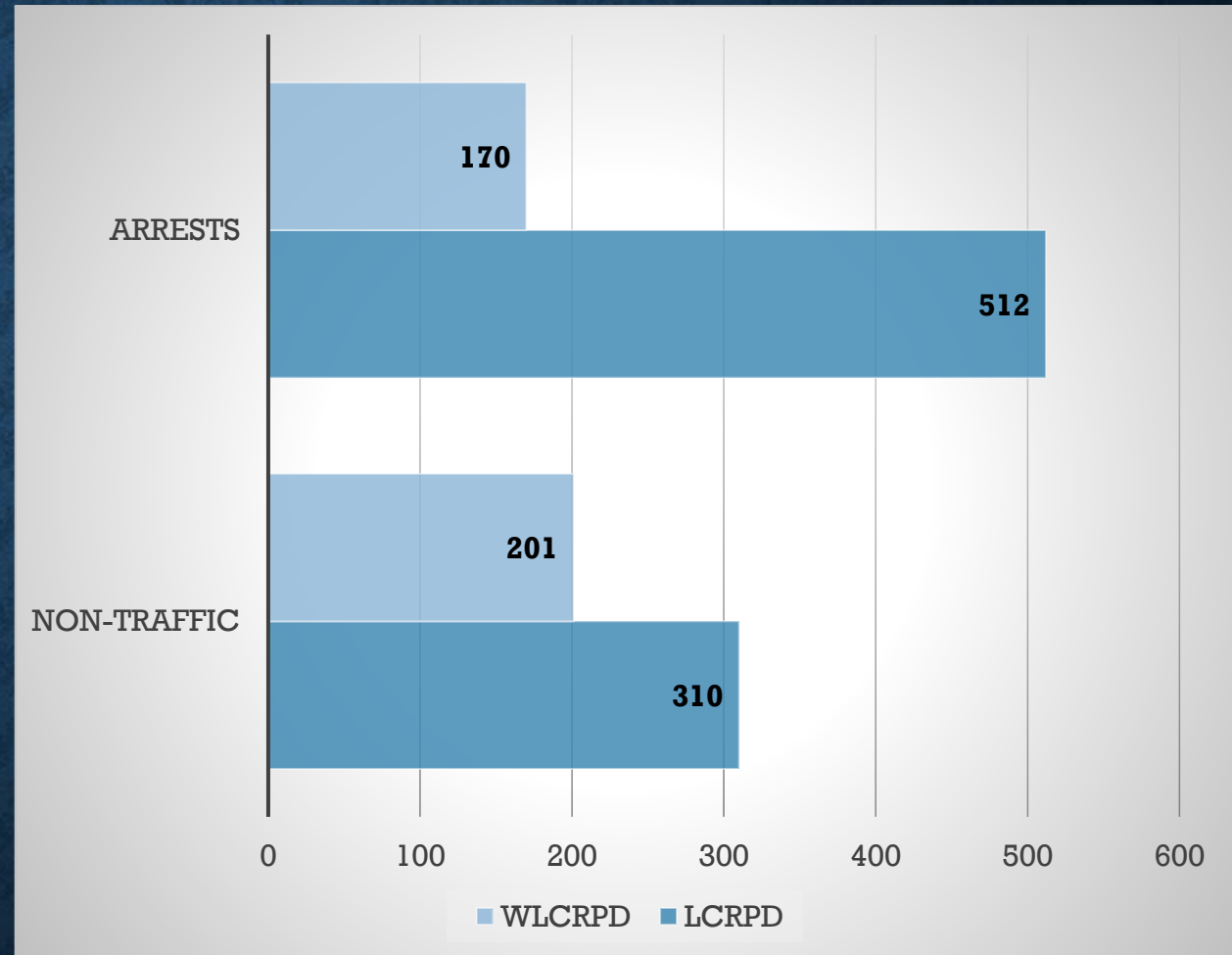
0700-1700: Admin plus Detectives

CALLS FOR SERVICE

LCRPD	15,862
WLCRPD	9,322
Total	25,184

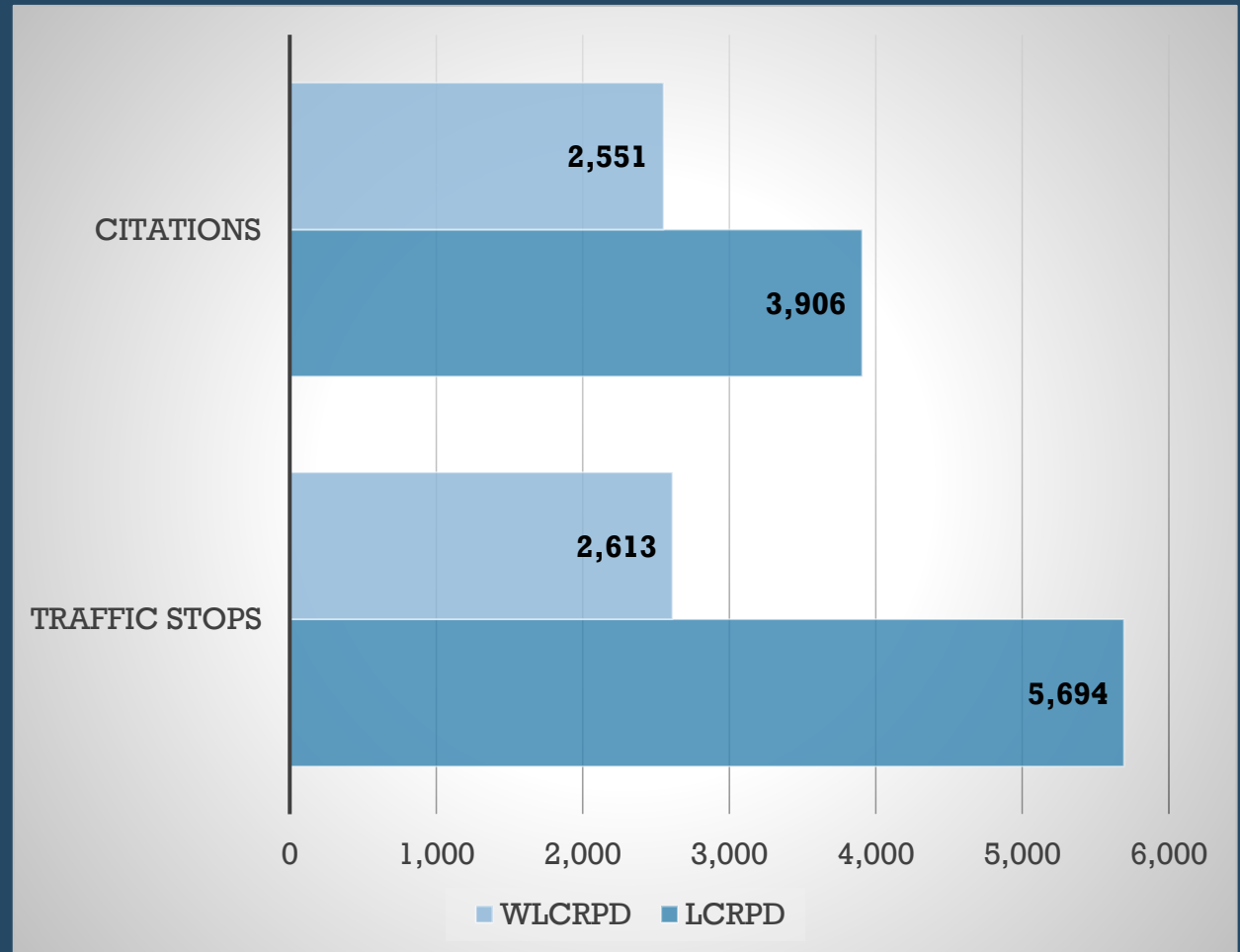
**TOTAL
ARRESTS:
682**

**TOTAL NON-
TRAFFIC:
511**



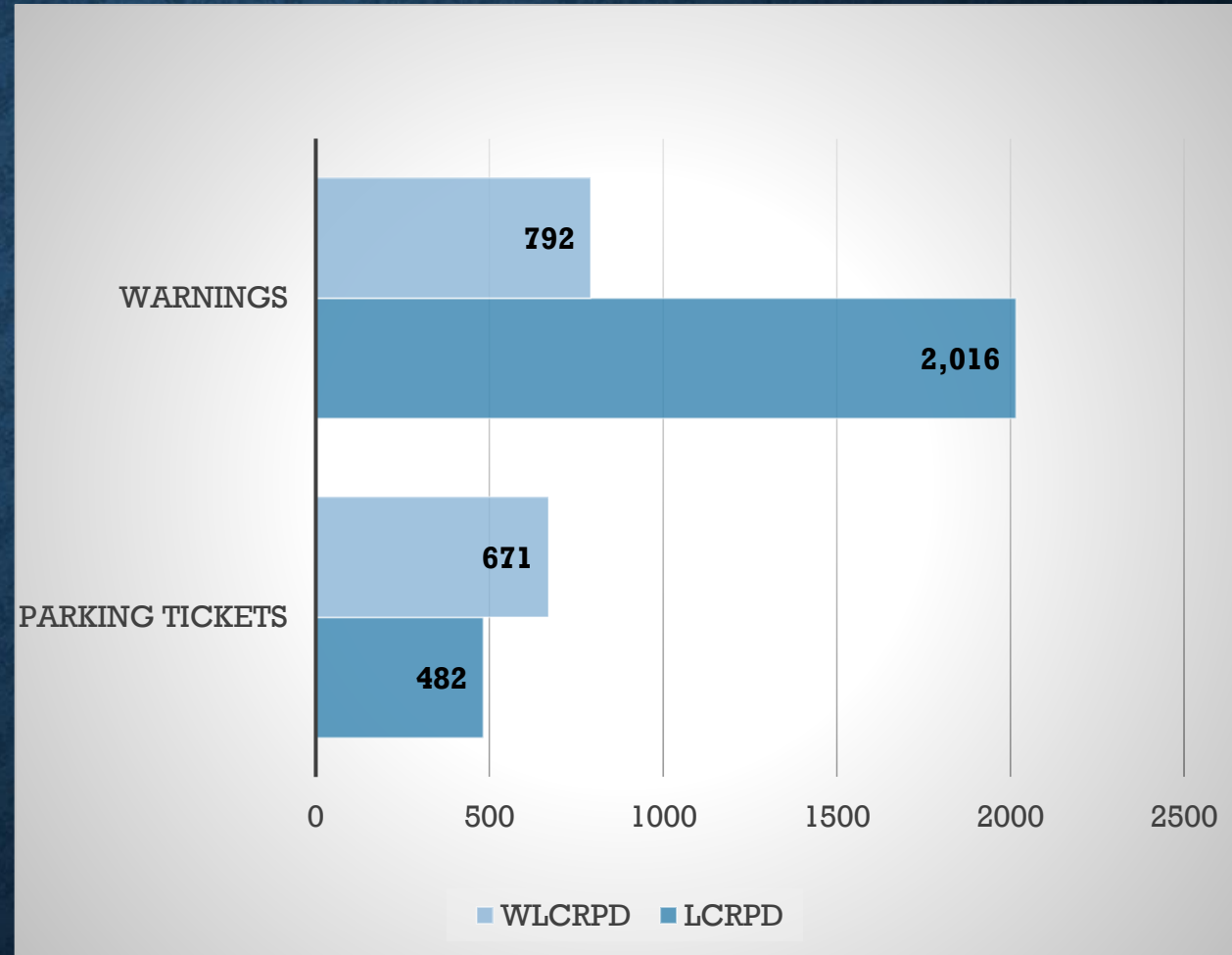
TRAFFIC ENFORCEMENT 2025

- Total Citations:
6,457
- Total Traffic Stops:
9,600



**TOTAL
WARNINGS:
2,808**

**TOTAL
PARKING
TICKETS:
1,153**



ACCIDENTS

	Reportable & Non-Reportable
LCRPD	564
WLCRPD	326
Total	890

TOTAL CRIMES INVESTIGATED

LCRPD	1,321
WLCRPD	640
Total Investigations	1,961

GRANT

- WLCRPD still has \$19,171.70 left in MAP Grant
- WLCRPD has applied for \$28,036 for LSA Funding for 2026
- LCRPD has \$33,000 in MAP Grant funds available
- LCRPD \$50,000 in Chief's Salary for 2026
- LCRPD has applied for \$100,000 in LSA Funding for 2026
- LCRPD has applied for \$12,831.36 in Bulletproof Vest Grant funding for 2026
- Would explore availability for MAP and DCED Start Up Grant for Agency

PENSION

WLCRPD currently uses PMRS.

LCRPD currently uses Stifel.

Options

1. The department can have 2 pension companies. We would need to decide where to place new officers moving forward.
2. Move everyone to one pension system.

One thing to be aware of, original Palmyra officers have a 12yr and age 50 option for retirement that they need to stay with PMRS.

BUDGET

Total Proposed Budget	\$7,531,173.89	Current	Savings
Annville	\$1,204,987.82	\$1,239,022.13	\$34,034.31
North Cornwall	\$2,184,040.43	\$2,310,302.35	\$126,261.92
North Lebanon	\$2,184,040.43	\$2,310,302.35	\$126,261.92
Palmyra	\$1,958,105.21	\$2,038,567.61	\$80,462.40

CURRENT OPERATIONS LCRPD

Headquarters – North Lebanon Township Building

- Primary location for patrol operations
- Offices:
 - Chief and Lieutenant share an office
 - Detective Lieutenant shares an office with a detective
 - Sergeants and Corporals have individual or shared offices
 - Most patrol officers share desks in the squad room
- Space for briefings
- Garage space for patrol vehicles
- Adequate locker room space, including separate female facilities
- Staffing:
 - One full-time secretary
 - One part-time secretary

CURRENT OPERATIONS LCRPD

Substation

- Primarily used for administrative functions
- Offices for:
 - Chief
 - Lieutenants
 - Detective
- Staffing:
 - One secretary
 - One administrative assistant
- Facilities:
 - Smaller locker room
 - Large conference room
 - Three garage bays for vehicles

CURRENT OPERATIONS WLCRPD

Headquarters – Palmyra Borough Building

- Primary location for:
 - Administration
 - Detectives / Investigations
 - Patrol operations
 - 2- Part time secretaries
- Space for briefings and meetings
- Garage space for patrol vehicles

CURRENT OPERATIONS WLCRPD

Substation – Annville Township Building

- Restroom facilities for patrol
- Space for patrol officers to complete reports and paperwork

CLERICAL & ADMINISTRATIVE SUPPORT STAFF

LCRPD HEADQUARTERS

Full-Time Secretary

- Prepare and submit arrest discovery packets to the District Attorney's Office
- Compile and maintain statistical data related to arrests
- Handle walk-in complaints and dispatch appropriate police personnel
- Answer and route incoming phone calls
- Process parking tickets, solicitation permits, and Drug Take Back logs and disposals
- Provide comprehensive administrative support for daily department operations

Part-Time Secretary

- Submit traffic and non-traffic citations
- Enter traffic accident reports into RMS
- Answer phones and assist the public with walk-in complaints
- Dispatch police officers and take messages for department personnel
- Provide full coverage during Full-Time Secretary absences

CLERICAL & ADMINISTRATIVE SUPPORT STAFF

LCRPD SUB- STATION

Full-Time Secretary

- Prepare and submit arrest discovery packets to the District Attorney's Office
- Record, track, and bill false alarm incidents
- Process and receive parking tickets
- Attend meetings and prepare official meeting minutes
- Handle walk-in complaints, answer phone calls, and dispatch police officers
- Manage Right-to-Know requests and records retention/destruction
- Process court subpoenas and notify officers of court appearances

Administrative Assistant

- Assist the Chief of Police with budgeting and financial planning
- Maintain accounts payable and receivable
- Coordinate with insurance companies and manage workers' compensation claims
- Process payroll, pension documentation, and safety committee compliance
- Attend LCRPD commission meetings
- Prepare and present monthly treasury reports

CLERICAL & ADMINISTRATIVE SUPPORT STAFF

WLCRPD HEADQUARTERS

Part-Time Secretary

- Handle walk-in complaints, answer phone calls, and dispatch police
- Prepare arrest discovery packets
- Submit traffic and non-traffic citations
- Answer phones and assist the public with walk-in complaints
- Dispatch police officers and take messages for department personnel

- **Part-Time Secretary (Administrative Support)**
- Assist the Chief of Police with budgeting and financial oversight
- Maintain accounts payable and receivable
- Coordinate with insurance providers
- Process workers' compensation claims, payroll, and pension documentation
- Manage accreditation reporting and records

PROPOSED ONE REGIONAL OPERATIONS

Headquarters – North Cornwall Township Building

Primary work location for: Administrative
staff and Detectives

Functions and capabilities:

VSA Room

Digital Evidence Room

Sub-Station for Patrol Zones 1 and 2

PROPOSED ONE REGIONAL OPERATIONS

North Precinct – North Lebanon Township Building

Patrol officers and shift supervisors report here based on residential proximity

Functions and capabilities:

- Evidence storage
- Department gym
- Crime lab for evidence processing
- Training
- Vehicle maintenance
- Report writing and criminal charge preparation
- Interviews
- Temporary holding of suspects

PROPOSED ONE REGIONAL OPERATIONS

West Precinct – Palmyra Borough Building

Patrol officers and shift supervisors
report here based on residential
proximity

Functions and capabilities:

- Evidence storage
- Training
- Report writing and criminal charge preparation
- Arrest processing and charge preparation
- Interviews
- Temporary holding of suspects

**PROPOSED
ONE
REGIONAL
OPERATIONS**

Annville Sub-Station

- Location where officers can:
 - Stop to complete reports
 - Use restroom and facility amenities

OPERATIONS MODELS FOR DEPARTMENT

Option 1 – Centralized In-Person Briefing

- Patrol officers and supervisors report to:
 - West Precinct *or* North Precinct based on residential proximity
 - Use locker rooms and prepare assigned patrol vehicles
- Officers then respond to Headquarters for in-person briefing
- Two early patrol cars will already be assigned to Zones 2 and 5 to handle emergencies
- After briefing:
 - Shift supervisors assign zones
 - Supervisors meet with early cars to brief on:
 - Assignments
 - Needs
 - Wanted persons
 - Hot lists
 - Critical information
- Administrators and/or detectives may attend briefings

OPERATIONS MODELS FOR DEPARTMENT

Option 2 – Remote Briefing Model

- Patrol officers and supervisors report to:
 - West Precinct *or* North Precinct based on residential proximity
 - Use locker rooms and prepare for duty
- Briefing conducted remotely via Zoom
- Supervisors then meet with the two early cars to relay briefing information

BENEFITS OF BRIEFINGS

- Sharing important information from prior shifts, Wanted people, Hot list, Officer Safety, criminal activity, etc.
- Trainings
- Zone Assignments
- Inspections/Address officer concerns, equipment needs
- Open line of communication with a supervisor



SUMMARY OF THE REGIONAL POLICE DEPARTMENT

- 40 Full-time Officers
- Increased patrol visibility and reduced response time to all calls for service
- Standardized Uniforms, Cars, Equipment, Reports & Policies
- Daily per Capita Cost range of \$0.68 per person
- Cost Savings for all taxpayers in Annville, North Cornwall, North Lebanon and Palmyra

WHAT IF???

What if the following Municipalities combined:

Annville

North Cornwall

North Lebanon

Palmyra

South Annville

South Lebanon

Things to think about:

Cost Saving?

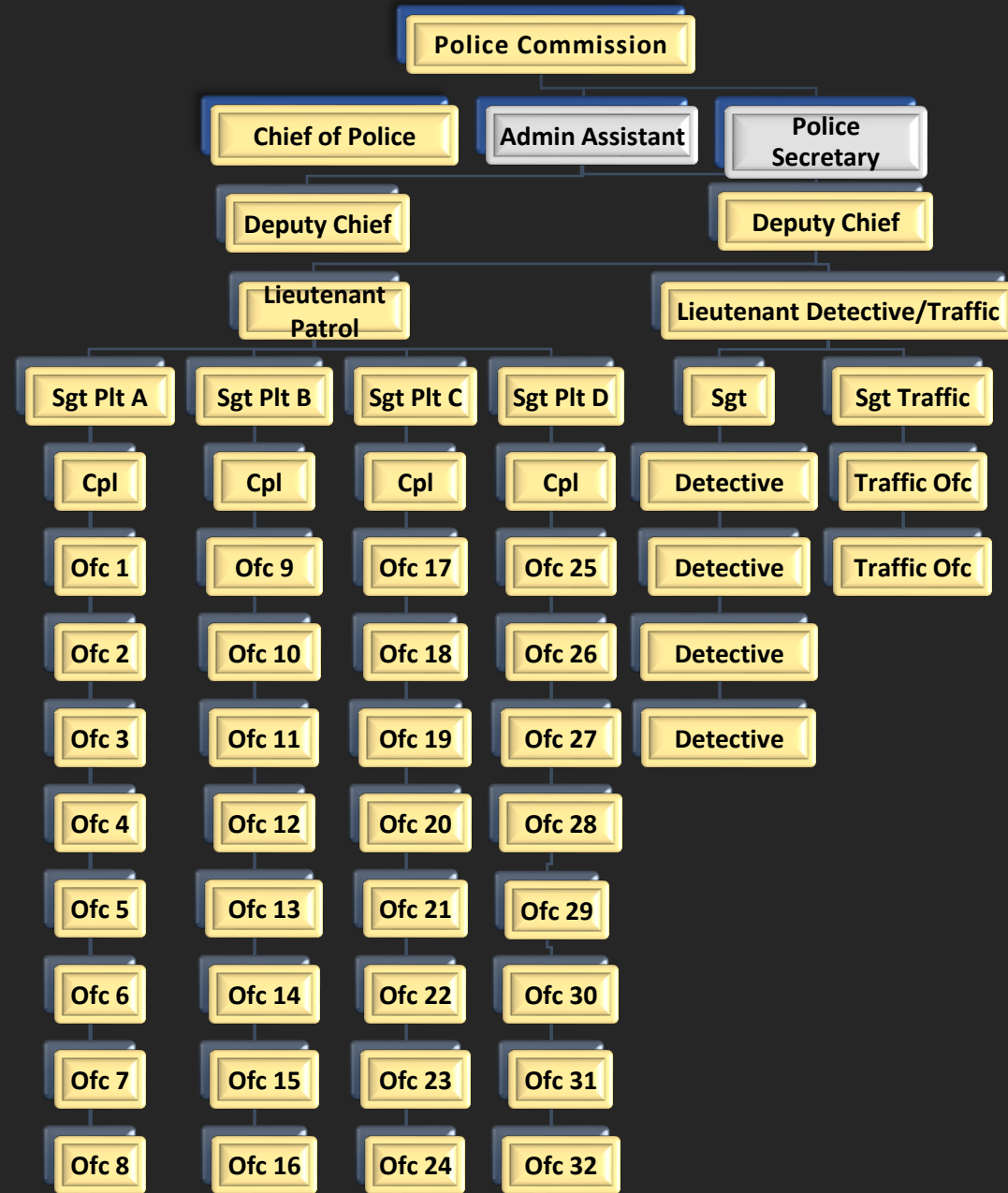
Better coverage?

Better Response time?

Standardized Uniforms, Cars, Equipment, Reports &
Policies



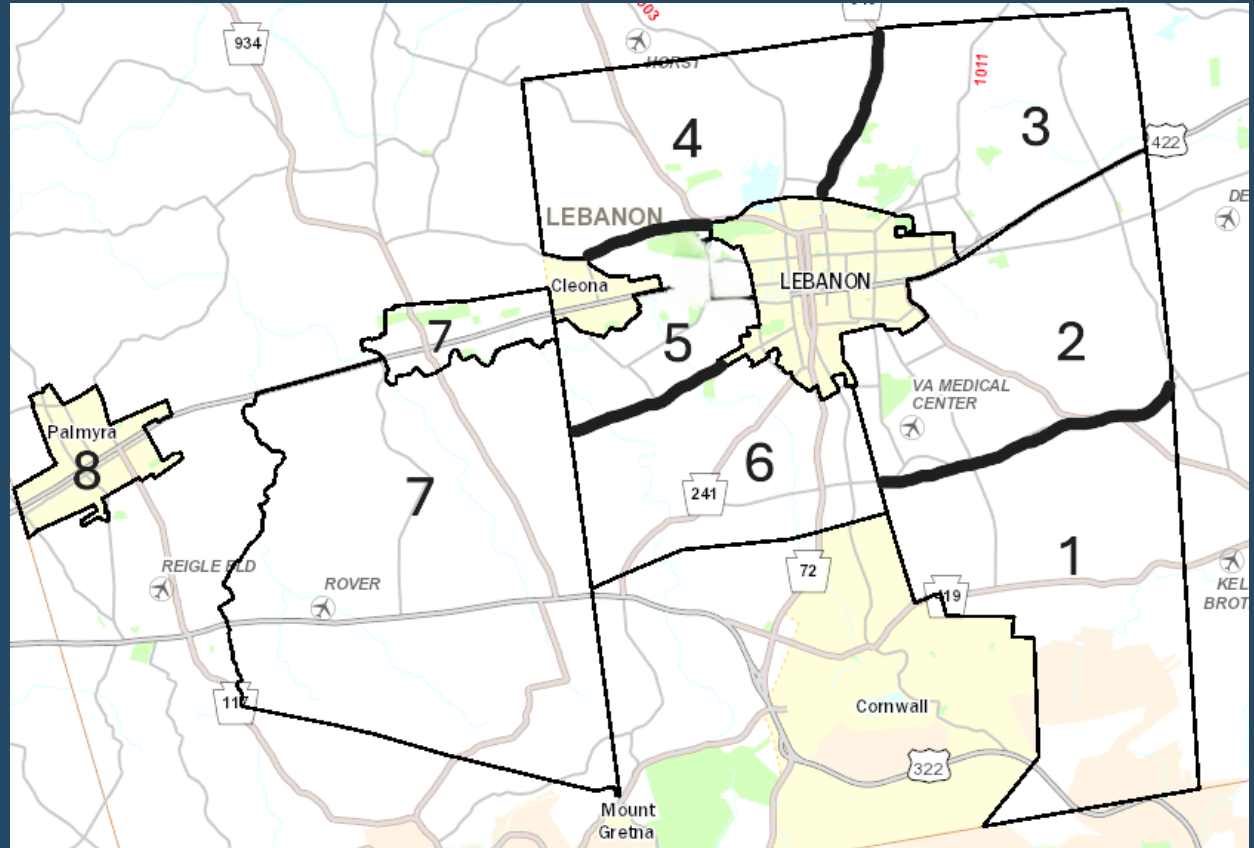
ONE REGIONAL DEPARTMENT



Combined Dept:
LCRPD, WLCRPD,
South Annville,
South Lebanon

52 Officers
1 Admin Assistant
3 Full-time Secretary
3 Part-time Secretary

8 Car District





SUMMARY OF THE 6-MEMBER REGIONAL POLICE DEPARTMENT

- 52 Full-time Officers
- Increased patrol visibility and reduced response time to all calls for service
- Standardized Uniforms, Cars, Equipment, Reports & Policies
- Detectives to handle investigations
- Cost Savings for all taxpayers in Annville, North Cornwall, North Lebanon, Palmyra, South Annville and South Lebanon,